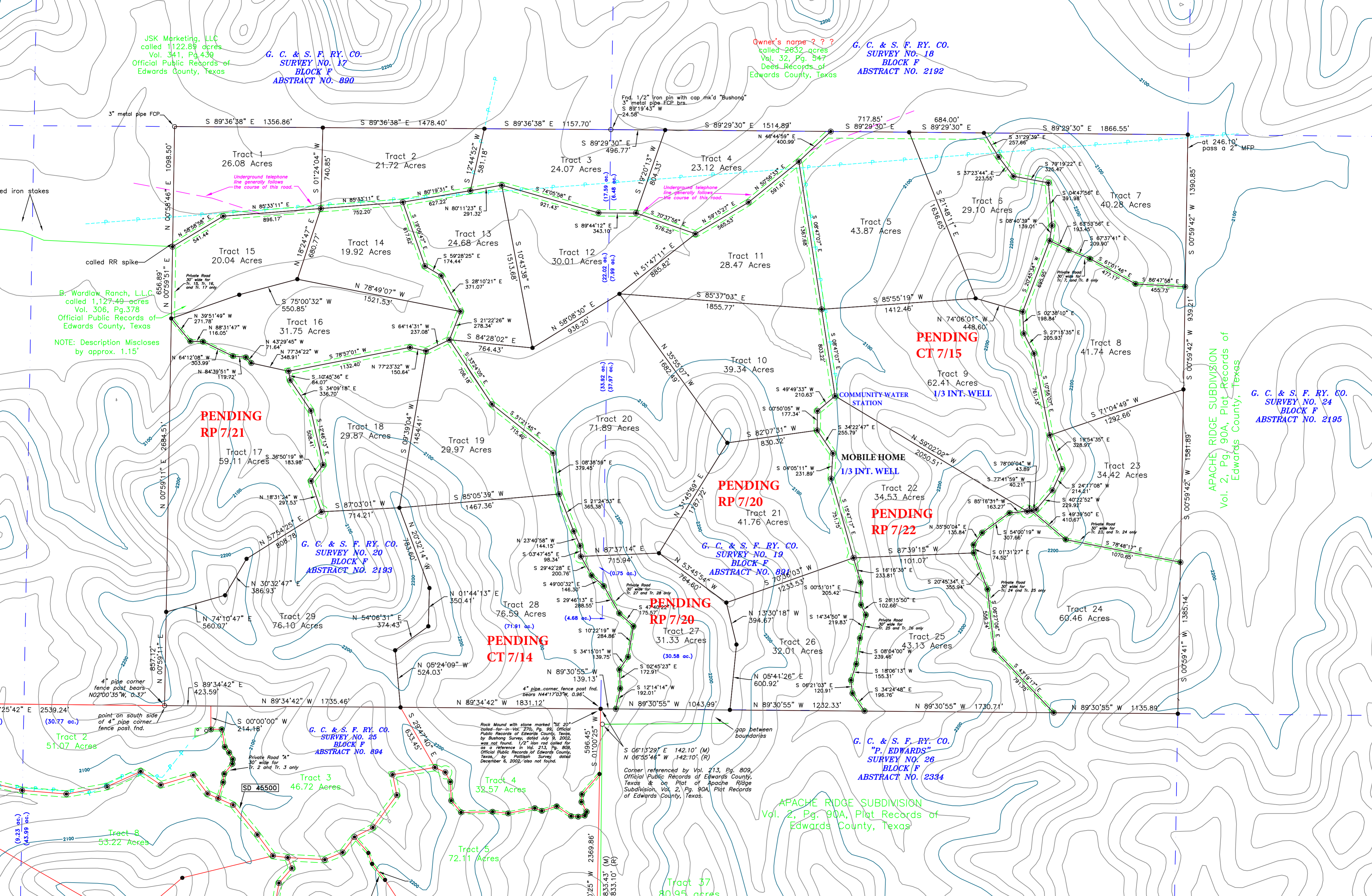


JSK Marketing, LLC
called 1122.89 acres
Vol. 341, Pg. 439
Official Public Records of
Edwards County, Texas

G. C. & S. F. RY. CO.
SURVEY NO. 17
BLOCK F
ABSTRACT NO. 890

Owner's name ???
called 2632 acres
Vol. 32, Pg. 547
Deed Records of
Edwards County, Texas

G. C. & S. F. RY. CO.
SURVEY NO. 18
BLOCK F
ABSTRACT NO. 2192



B. Wardlaw Ranch, L.L.C.
called 1,127.49 acres
Vol. 306, Pg. 378
Official Public Records of
Edwards County, Texas

NOTE: Description Miscloses
by approx. 1.15'

PENDING
RP 7/21

PENDING
CT 7/15

PENDING
RP 7/20

PENDING
RP 7/22

PENDING
CT 7/14

PENDING
RP 7/20

G. C. & S. F. RY. CO.
SURVEY NO. 19
BLOCK F
ABSTRACT NO. 891

G. C. & S. F. RY. CO.
SURVEY NO. 20
BLOCK F
ABSTRACT NO. 2193

G. C. & S. F. RY. CO.
SURVEY NO. 25
BLOCK F
ABSTRACT NO. 894

G. C. & S. F. RY. CO.
"P. EDWARDS"
SURVEY NO. 26
BLOCK F
ABSTRACT NO. 2334

APACHE RIDGE SUBDIVISION
Vol. 2, Pg. 90A, Plat Records of
Edwards County, Texas

G. C. & S. F. RY. CO.
SURVEY NO. 24
BLOCK F
ABSTRACT NO. 2195

APACHE RIDGE SUBDIVISION
Vol. 2, Pg. 90A, Plat Records of
Edwards County, Texas

Corner referenced by Vol. 213, Pg. 809,
Official Public Records of Edwards County,
Texas & on Plat of
Subdivision, Vol. 2, Pg. 90A, Plat Records
of Edwards County, Texas.

Rock mound with stone marked "SE 20"
called-for-in-Vol. 270, Pg. 99, Official
Public Records of Edwards County, Texas,
by Bushong Survey, dated July 9, 2002,
was not found. 1/2" iron rod called for
as a reference in Vol. 213, Pg. 809,
Official Public Records of Edwards County,
Texas, by Pottish Survey dated
December 5, 2002, also not found.

4" pipe corner
fence post bears
N02°00'35"W, 0.37'

4" pipe corner fence post found
bears N44°17'03"W, 0.96'

gap between
boundaries

SD 45500

(6.23 ac.)
(43.99 ac.)

Tract 37
80.95 acres

Tract 5
72.11 Acres

Tract 4
46.72 Acres

Tract 8
53.22 Acres

Tract 2
51.07 Acres

(30.77 ac.)

25°42' E 2539.24'

point on south side
of 4" pipe corner
fence post found.

857.12'

N 00°59'11" E 2684.51'

N 00°59'11" E 2684.51'

N 00°59'11" E 2684.51'

N 00°59'11" E 2684.51'

N 00°59'11" E 2684.51'

N 00°59'11" E 2684.51'

N 00°59'11" E 2684.51'

N 00°59'11" E 2684.51'

N 00°59'11" E 2684.51'

N 00°59'11" E 2684.51'

N 00°59'11" E 2684.51'

N 00°59'11" E 2684.51'

N 00°59'11" E 2684.51'

N 00°59'11" E 2684.51'

N 00°59'11" E 2684.51'

N 00°59'11" E 2684.51'

N 00°59'11" E 2684.51'

N 00°59'11" E 2684.51'

N 00°59'11" E 2684.51'

N 00°59'11" E 2684.51'

N 00°59'11" E 2684.51'

N 00°59'11" E 2684.51'

N 00°59'11" E 2684.51'

N 00°59'11" E 2684.51'